

Index No. T-21

# CERTIFICATE OF LOCATION OF GOVERNMENT CORNER

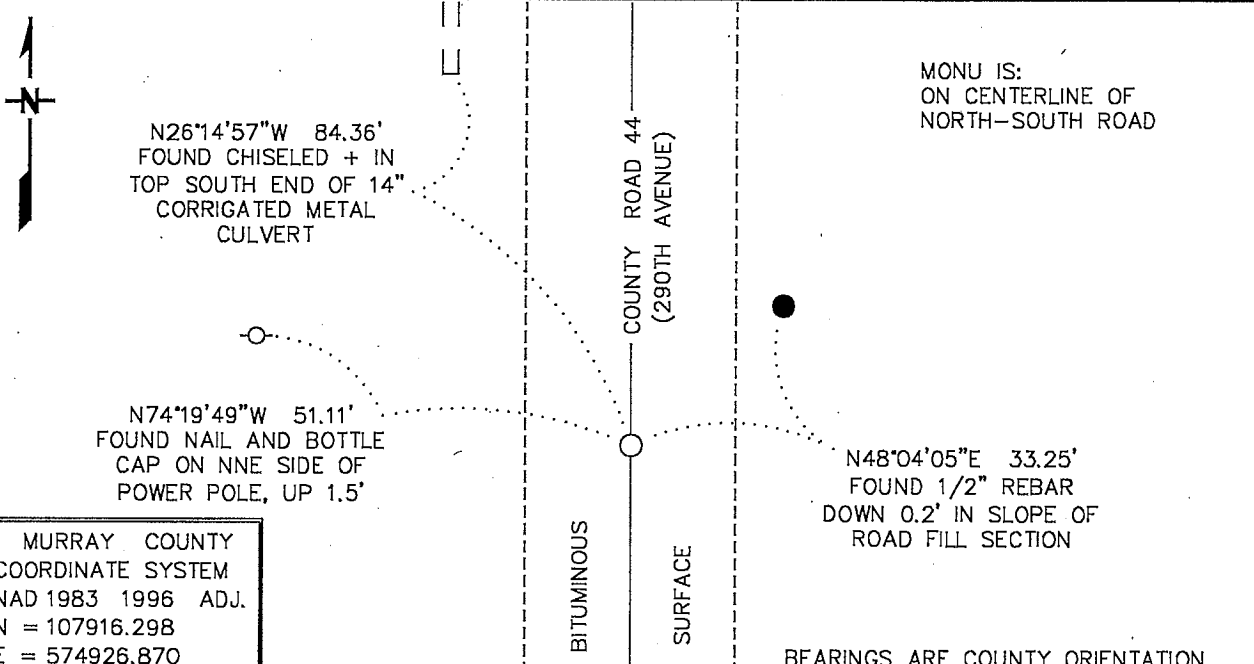
EAST QUARTER Corner of Section 26, Township 105 N, Range 39 W  
5TH Principal Meridian, State of Minnesota, County of MURRAY

At the corner location shown on the sketch:

■ On 7/18/16 found a 5/8" X 18" REBAR, DOWN 1.5'  
DATE

left monument as found,  lowered monument,  removed monument (explain)

■ On 8/16/16 Placed a 3/4" X 24" REBAR WITH PLASTIC CAP STAMPED  
DATE  
"MN DNR LS 17003", DOWN 0.7' IN PLACE OF FOUND REBAR



Statement of evidence for this corner location is on back of this page.

OCTOBER 2016  
WMA09007

I hereby certify that this plan, specification, or report was prepared by me or under my direct supervision and that I am a duly Licensed Land Surveyor under the laws of the State of Minnesota.

SIGNATURE Bruce W. Shepperd DATE 12/6/16 License Number 17003  
BRUCE W. SHEPPERD

The DNR Division of Lands and Minerals contacted the following for survey information:

Website - [mngeo.state.mn.us](http://mngeo.state.mn.us) for GLO plat and field notes

Website - [murray-countymn.com](http://murray-countymn.com) for section and quarter section corner information

Murray County Recorder's Office

Zieske Land Surveying Inc. of Windom

1861 U.S. General Land Office notes, obtained from [mngeo.state.mn.us](http://mngeo.state.mn.us), show the corner marked with a charred post, in a mound with a trench as per instructions.

No A Surveyor's Record Book A, page 54, obtained from the County Recorder's Office,  
Date shows a corner but does not indicate what kind of monument was found or set. The following ties are shown to the corner:

2691 feet from the northeast corner of Section 26

2528 feet from the southeast corner of Section 26

40.26 chains (2657.16 feet) from the center of Section 25

26.0 feet east to fence on line

41.0 feet to fence on line

No A Surveyor's Record Book, obtained from [murray-countymn.com](http://murray-countymn.com), shows a stone at the  
Date corner (per F.A. Marsh) but does not indicate if it was found or set. The following ties are shown to the corner:

2691 feet from the northeast corner of Section 26

2528 feet from the southeast corner of Section 26

40.26 chains (2657.16 feet) from the center of Section 25

RP tack in corner fence post, west on line 41.1 feet

RP tack in blazed fence post, east on line 38.1 feet

26.0 feet east to fence on line

2008 January, a Certificate of Survey in the Northeast Quarter of Section 26, by Perry Zieske, LS 23008, obtained from Zieske Land Surveying Inc., shows that a ½ inch iron stake was found at the corner. The corner is shown:

2693.80 feet from the northeast corner of Section 26, a found ¾ inch iron stake

2016 July 18, the DNR Division of Lands and Minerals found a 5/8 inch diameter by 18 inch long rebar, down 1.5 feet at corner. The found rebar was removed and the area below it was probed to a depth of 4 feet in search of a solid object but did not strike one. Also, scanned the area with an electronic metal detector but no metal attraction was obtained. The found rebar was found to be:

2693.71 feet from a spike found in the area of the northeast corner of Section 26

2526.91 feet from the southeast corner of Section 26

2634.74 feet from the center of Section 25

Searched for but found no evidence of the record ties.

Analysis of the above information led the DNR Division of Lands and Minerals to conclude that the found rebar marks the practical location of the corner - because it agrees with the distances per surveys by F.A. Marsh and Perry Zieske.